



WelcomHeritage

Palaces • Forts • Havelis • Resorts



WelcomHeritage Sirsi Haveli, Jaipur

Village Sirsi, Jaipur, Rajasthan, India

WelcomHeritage Sirsi Haveli is located in Sirsi Village on the outskirts of Jaipur. The haveli is more than 100 years old and has been fully renovated, offering rustic heritage ambience along with the addition of modern conveniences.

ACCOMODATION

Total Rooms: 23

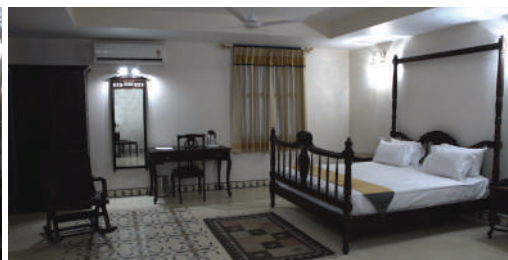
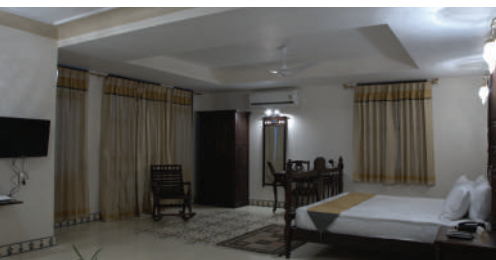
Deluxe Rooms: 12

Categories: 02

Suites: 11

FOOD AND BEVERAGE

Jiman Restaurant – A multi-cuisine restaurant IN-HOUSE COFFEE SHOP.



SERVICES & FACILITIES

Laundry service (Chargeable)

Doctor on call

Travel desk

LEISURE AND RECREATIONS

Swimming pool

Indoor games

Astrologer (on request)

Ayurvedic massage and treatment (on request)

MEETINGS & CONFERENCES

Theatre	U-Shape	Class Room	Floating
50	20-25	20-25	40-45

EXCURSIONS

Hawa Mahal - 19 km (approximately 40 mins)

Jal Mahal - 25 km (approximately 60 mins)

Johri Bazaar - 19 km (approximately 45 mins)

Amer Fort - Elephant Ride - 26 km (approximately 60 mins)

City Palace - 18 km (approximately 40 mins)

Jantar Mantar - 18 km (approximately 40 mins)

Nahargarh fort - 33 km (approximately 70 mins)

Jaigarh - 29 km (approximately 70 mins)

Galta Ji Temple - 25 km (approximately 60 mins)



HOW TO REACH

 Distance from Jaipur Airport - 19 km

 Distance from Jaipur Railway Station - 15 km

 Distance from Delhi - 280 km/ 5 hrs

 Distance from Jaipur - 12 km/ 30 min

LOCATION

Village Sirsi, Jaipur

Rajasthan, India

Pin Code: 322001

FOR ENQUIRIES

Corporate Office Contact

Tel: 080-45771900

E-mail: holidays@welcomheritagehotels.in

Hotel Contact

Tel: +91 141-2240033/2240029/5140606

E-mail: sirshaveli@gmail.com

www.welcomheritagehotels.in | Follow us on     

Sales offices

Ahmedabad (8980269876) | Mumbai (7291014044) | Jaipur (8107528107)
Delhi (7291017087) | Nagpur (7291018088) | Punjab (8427883332) | Bangalore (7897335773)